







---

---

**2.1.3**

2.1-4u

**2.1-4**

---

¶

	t
	Š < GB/T 19923-2005 u
t	
	t
t	
t t t	t t t t
t t	t t u t t
u	
	u
	- u
t	
t t t	

## 2.2

### 2.2.1

113°23'57.43"

30°20'24.44"u

3km

t t t t t t t t t  
t t u u

### 2.2.2

65

120 t 115 u

t t t u

0.1 0.3

100 u

16.2

38.8 ( )

-14.2 ( )u

1160 mm

192 mmu

1481 mm

---

1174 mmu	(NNE)	20
1.7m/s	20m/s	256 u
20	2.2-1u	
<b>2.2-1</b>		

---

	u							
				t	t		u	
	t					2	10 m	
	t						30	120 m
15	30 m		u	t				
			200 m			60 m		70 130
m		u				u		
								6.37×108
m <sup>3</sup> /a		46.561×108	m <sup>3</sup> /au			7.3931×108	m <sup>3</sup> /a	
5.2551×108	m <sup>3</sup> /a		2.138×108	m <sup>3</sup> /au				
9.92	45.27×104	m <sup>3</sup> /km <sup>2</sup> ·a				6.62	147.4×104	m <sup>3</sup> /km <sup>2</sup> ·a
			28.14×104	m <sup>3</sup> /km <sup>2</sup> ·au				

**2.2.5**

5

2.2-2u

2.2-2

				m		
1			NNE	1400	70	298
			NE	920	110	443
			NEE	620	140	517
			E	322	103	425
2		S	600	550	2350	
3		E	700-2800	420	1680	
4		W	800-1000	442	1676	
5	1	ESE	900-1700	500	2000	
6	+	NE	850-1600	400	1600	
7		N	910-1500	706	3050	
8		ESE	1350-1900	800	3200	
9		WN	1500-2400	91	313	

+ § <  
(GB3095-2012)

---

---

24		NW	2400-2600	100	400
25	1	N	2570-2820	40	160
26	7	NNE	1480-2380	215	860
27		NE	2200-2500	500	2000
28		SE	920		200
29		EN	20	<u>400</u>	

§

<

[2014]34

A

1t 2 3 E1t E2 E3

2.2-3u

**2.2-3**

		t	t	10					
							t		t
1	E1					t		t	
			24						
		5		t	t	t	t		
		5	5		500				1000
		5		t	t				
		t		t	10				
							t		
2	E2	5		t	t	t	t		
			1	5			500		
		500	1000						
			t	t					
		10			1	2			
3	E3	5		t	t	t	t		
			1		500				500 u

5.0km

t

t

t

t

80133

5

E1u

**2.3**

2.3-1u

---

---

**2.3-1**

1		u







t + t t

### 3.1.3

30m<sup>3</sup> 16.8t 27.6t 5.52t u 20m<sup>3</sup>

§ < HJ941-2018

1

u

2

$$\frac{q_1}{Q_1} + \frac{q_2}{Q_2} + \dots + \frac{q_n}{Q_n} \geq 1$$

q1t q2.....qn t  
Q1t Q2.....Qn tu

3.1-5

			t	t	
1			16.8	2500	
2	20%		5.52	10	

## 3.2

### 3.2.1

u

u

0#

t t t

---

t

u

u

1

540m<sup>3</sup>

u

---

---

t 1.45 u

$$V_5 = 167.7 \text{ m}^3 \text{ u}$$

$$V = 50 + 180 - 55 + 167.7 = 342.7 \text{ m}^3$$

$$342.7 \text{ m}^3$$

1

$$540 \text{ m}^3$$

u

u

### 3.2.2

$$5 \text{ ng TEQ/m}^3$$

2 500t/d

$$7200 \text{ m}^3$$

$$36000 \text{ ng TEQu}$$



---

5.6%

u

**3.2.5**

t t

t u  
0.5 1 / u

3

1620m<sup>3</sup>u

190t/d 200t/d

u Š < GB50483-2009

E

---

---

**3.2.6**

10min  
LC50  
18.1m  
300m  
30min  
IDLH  
91.6m  
u  
u  
u

**3.2.7**

t t t u  
260m<sup>3</sup> " - ...  
Š <  
(GB18597-2001 2013 ) t t u  
t t  
u  
Š < GB18597-2001 2013  
t  
1  
≤10<sup>-7</sup>cm/s 2 2  
≤10<sup>-10</sup>cm/su  
t t u  
t t t  
u  
t  
u u  
GB15562.2  
u

591 Š < t 5 Š



---

t t t t

t t

u

t t t t

t t

t u

**3.2.8**

u

50

u

**3.3**

š

<

Q

$$Q = \frac{q_1}{Q_1} + \frac{q_2}{Q_2} + \dots + \frac{q_n}{Q_n}$$

q1, q2, ..., qn—

t

Q1, Q2, ..., Qn—

tu

3.1.3

Q=0.923u

š

<

Q 1

Q

u

Q, 1

Q

1

1· Q

10

2

10· Q

100

3

Q, 100

Q1t

Q2

Q3

u

Q

Q 1

u

---

---

### 3.4

#### 3.4.1

t t t t t

u

3.4-1u

#### 3.4-1

				3
1	t t t t	u	t u u	t

---

2 t

---

# 4

t

t

u

## 4.1

t

t

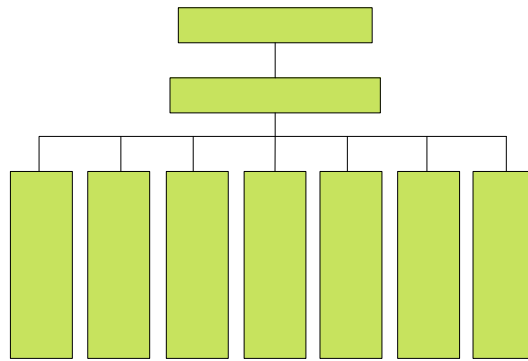
t

t

t

u

4.1-1u



4.1-1

## 4.2

### 4.2.1

t

u

u

t

t

t

t

t

t

u

t

u

u

u

u

t

t

t

t

t

t

u

#### 4.2.2

t

t

1

2

3

4





5 u  
t  
u  
6  
t t  
7 t u  
u  
119 u

---

# 5

## 5.1

### 5.1.1

t u  
t t u  
t t u

### 5.1.2

			(1)				
			(2)	u		t	t
			(3)			t	t
			(4)				
			(1)				
	t	t	(2)		t	t	t
			(3)				u
			(4)				u
			(1)				
			(2)	7	3		1620m <sup>3</sup>
			(3)			u	
			(4)				
			(1)				
			(2)				
			(3)				
			(4)				

â

g) û ; <sup>3</sup>q ÷

---

3

4

SO<sub>2</sub>

5

6

7

8

**5.2.2**

t

t

t

t

t

u

t

t

u

5.2-1u

**5.2-1**

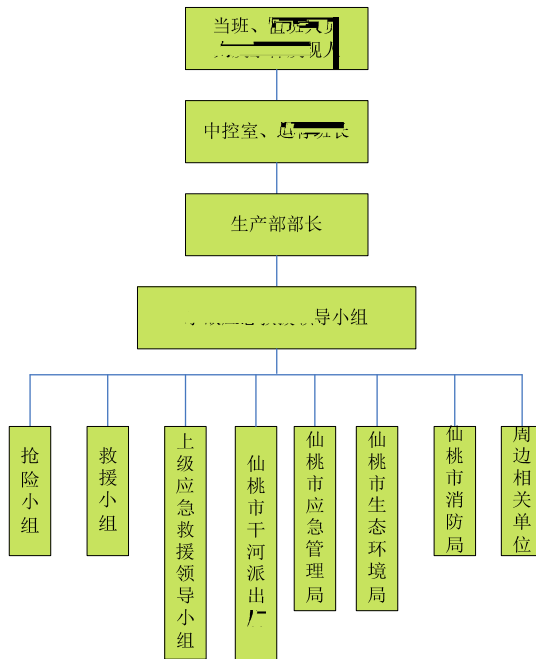
	1
	2
	u
	1
	2
	3
	4
	SO <sub>2</sub>
	5
	1
	2



3

u

5.2-1u



5.2-1

5.3

5.3.1

u

5.3.2

u

t

u

u

5.4

119

24

u

u

1

t

t

2

t

3

t

u

1

2

t

1 t 2

3

3

4

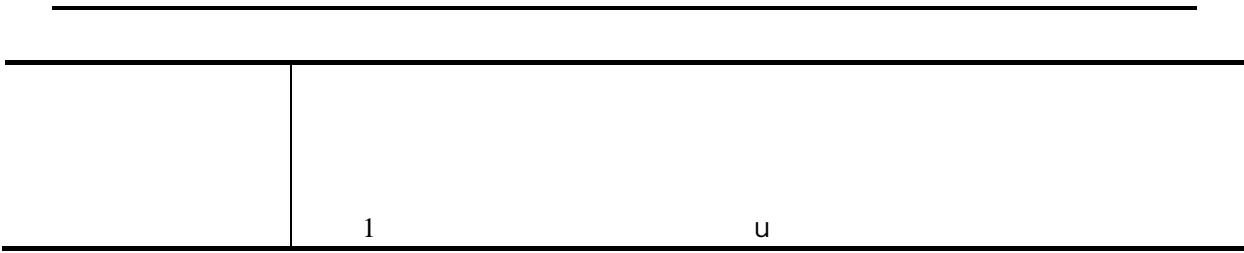
t

5

6

u

5.4-1u



---

# 6

## 6.1

1  
t t u  
2 t u  
3  
u  
4 t u  
5 24 0728-3609321u

## 6.2

u  
1 t u  
18515181362  
17562253555u  
1 t  
2 t  
3 t  
4 t t  
5  
6  
7 u  
u

---

---

### 6.3

t t t t t t t t  
t t t t t t t t  
t u  
t t t  
u

#### 6.3.1

1 t t  
2 t t  
3  
4  
5 t t t  
u

#### 6.3.2

1  
0728-3222894  
0728-3222810  
119  
0728-3224695  
12369t 0728-3322856  
0728-3318933  
027-87861455  
2  
. 15826880999  
. 13707224477



---

---

7

Š

<

10

10 u

8u

7-1u

7-1

1			60		15607221281		1
2			70		15572885707		8
3			65		15711221921		4
4			60		185721903371		
5			55		15826880628		
6			66		15908614346		
7			60		13094250675		
8			61		15871837955		
9			53		13986923056		
10			38		13794030370		

u

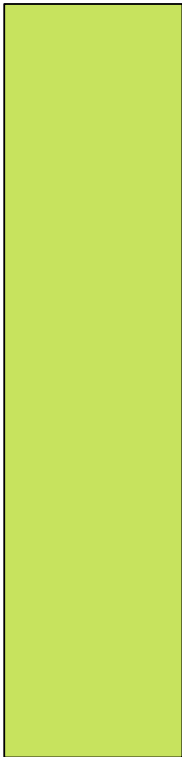
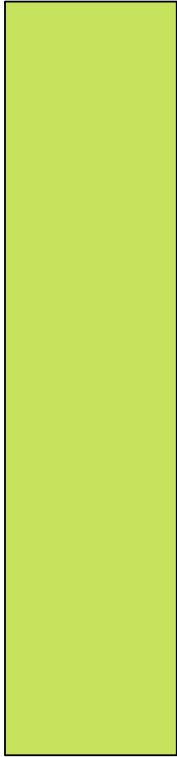
u

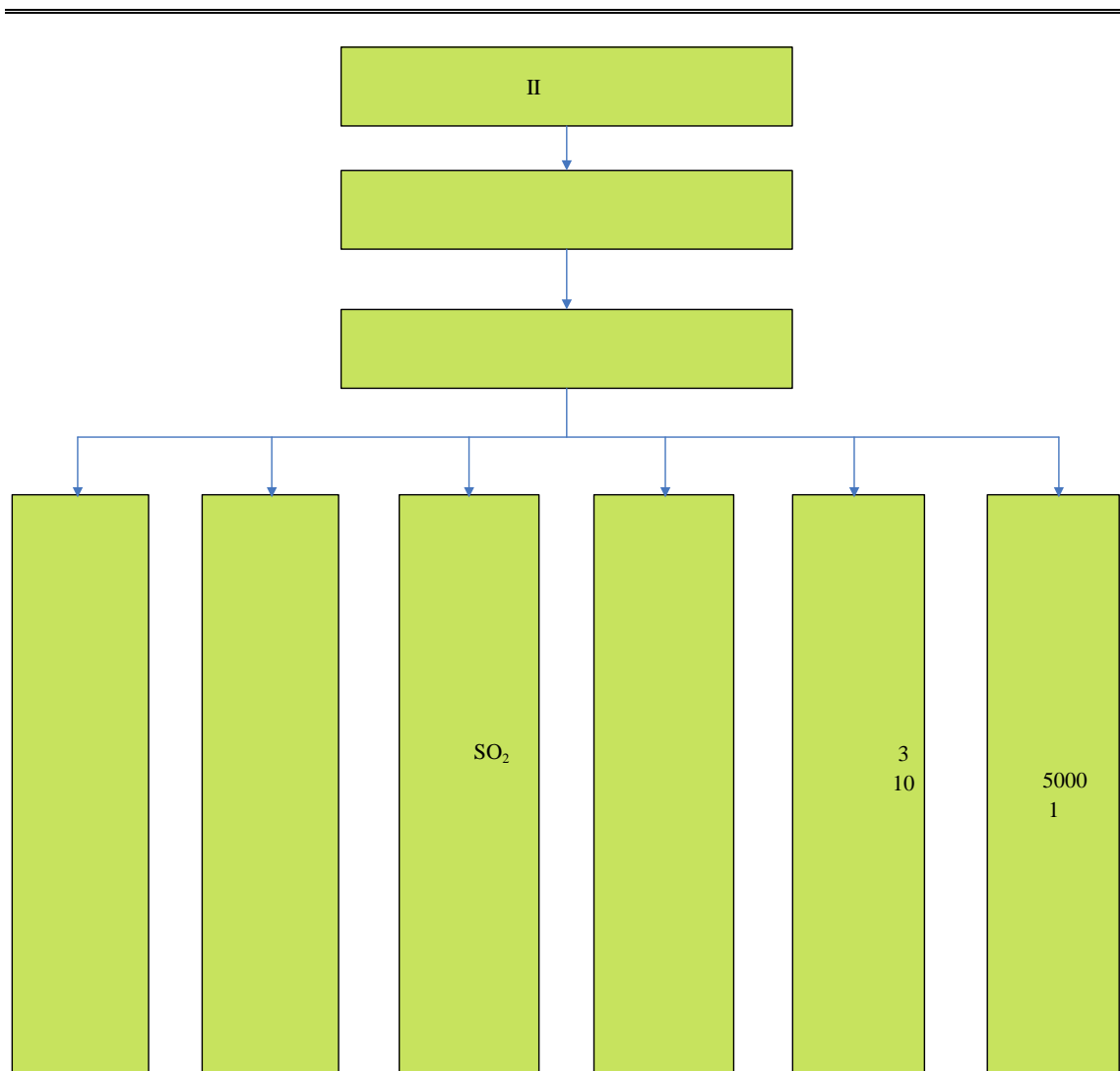
---

# 8

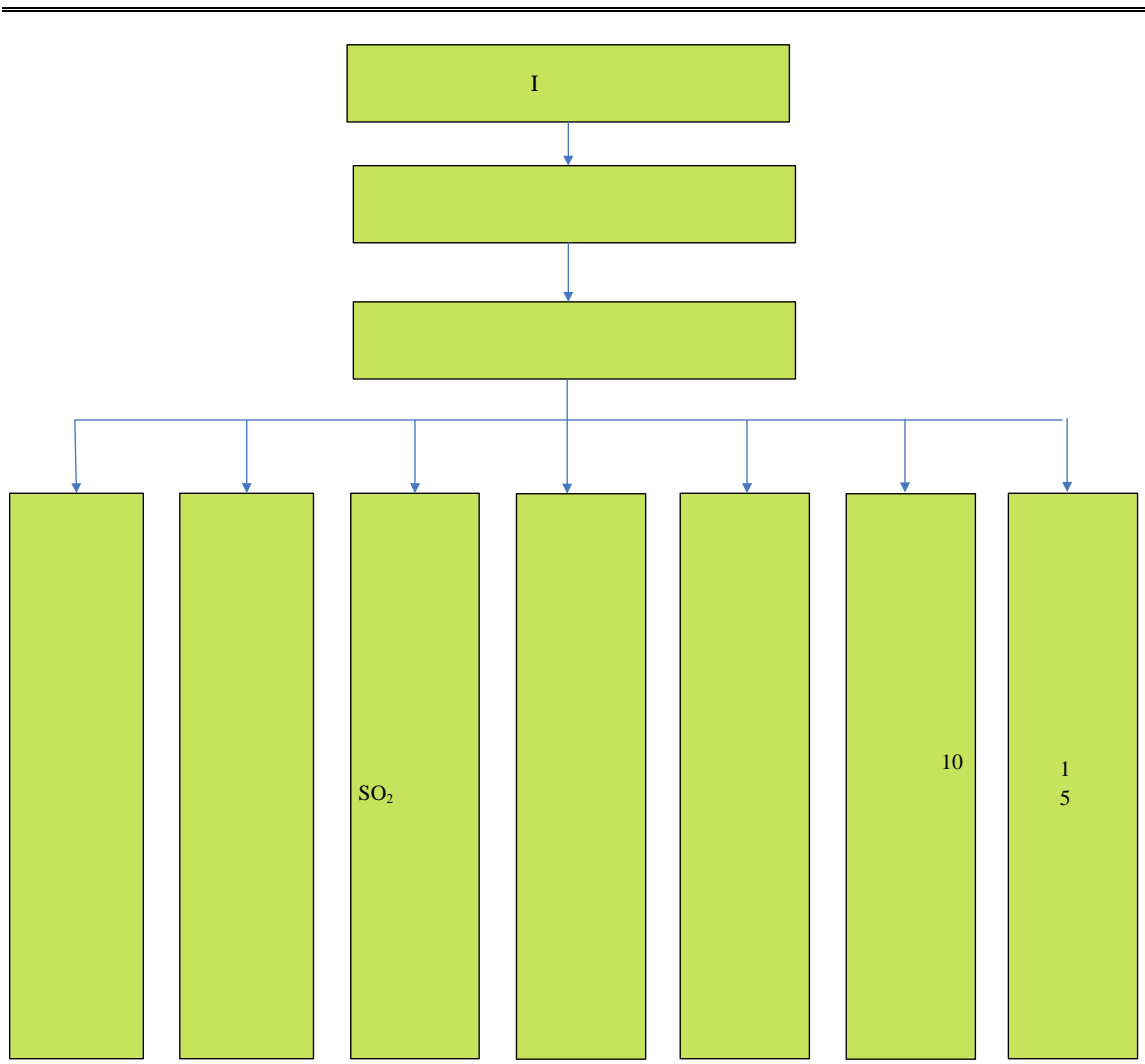
## 8.1

t t t t  
t u t t u t  
t t u  
u u





8.1-2 II



8.1-3 I

8.2

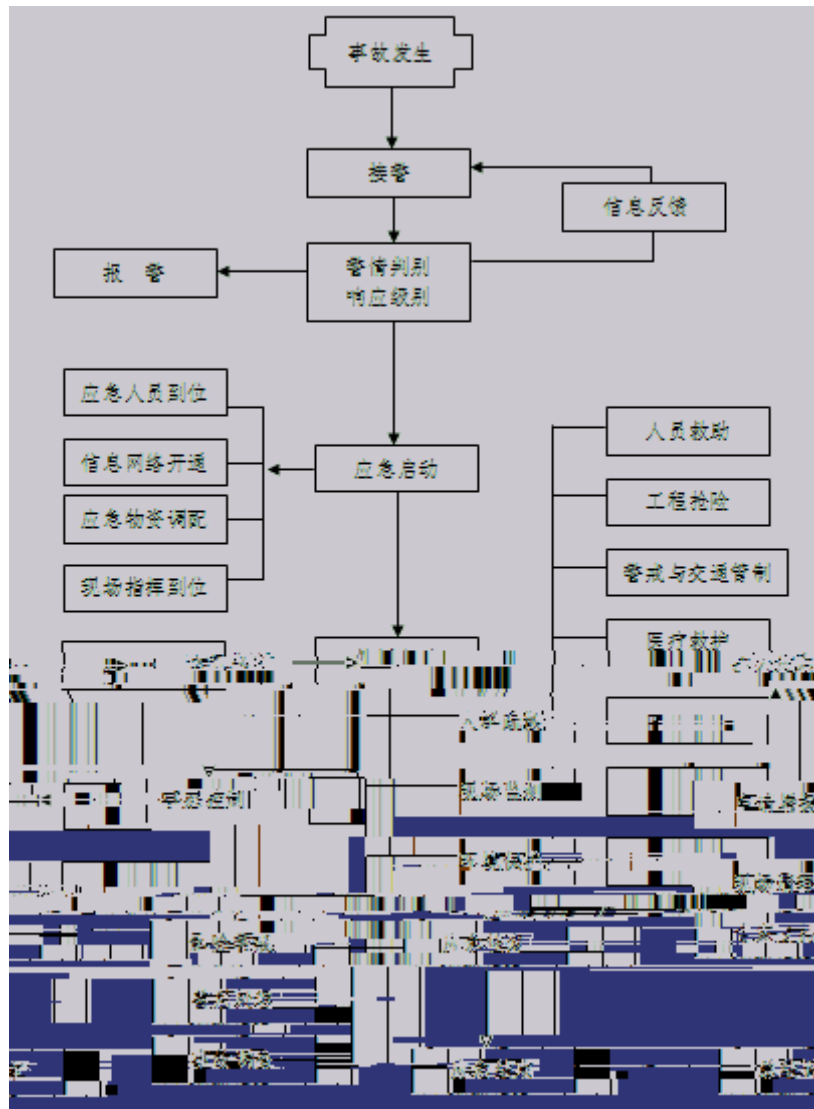
8.2.1



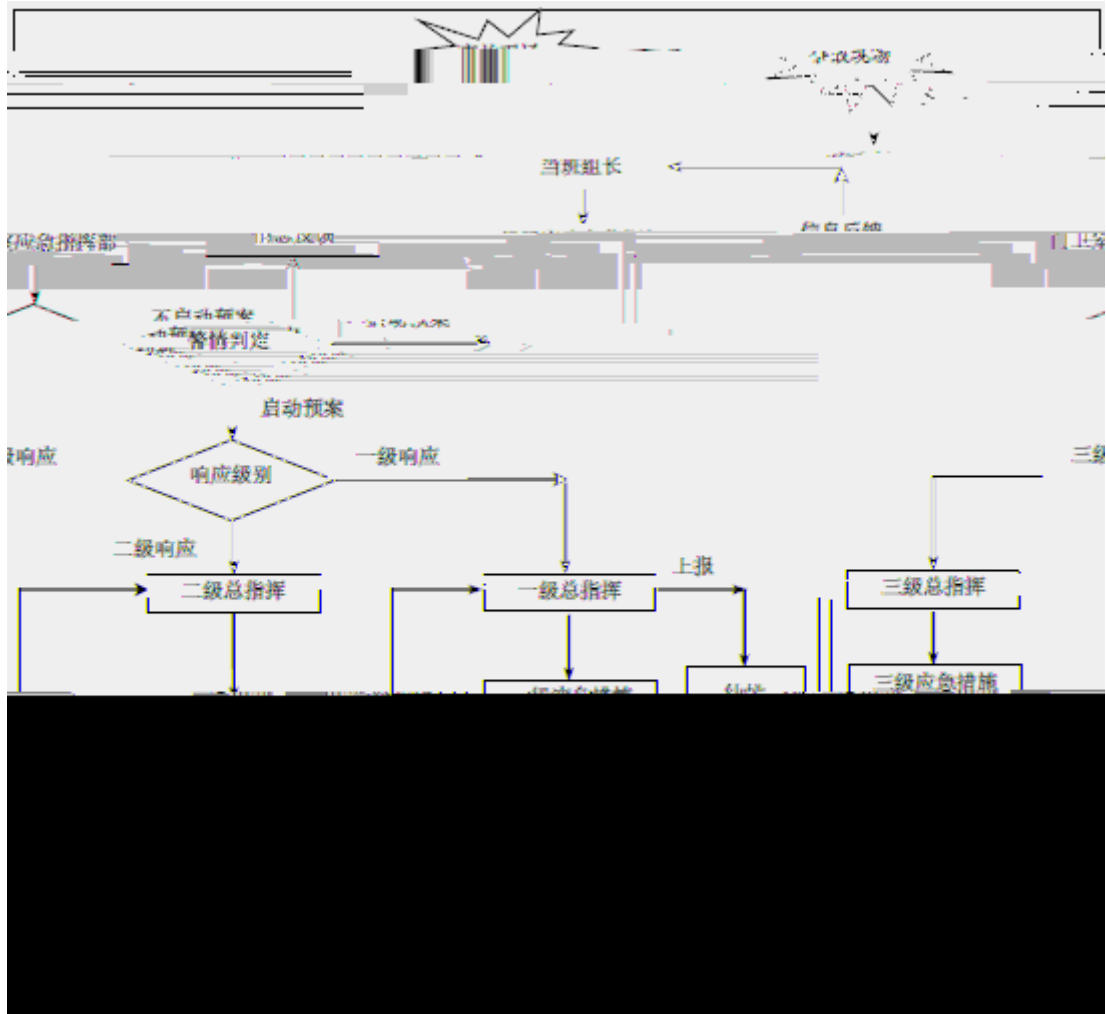
8.2-2u

u

8.2-1



8.2-1



8.2-2

- 1
- 2
- 3
- 4
- 5
- 6
- 7

u

t

u

t

t

t

t

t

t

t

---

u

u



u  
6 u t u  
7 u  
t t u t  
u  
u u u  
t t u  
u  
u  
8 t u t t